

# Energieprestatievergoeding





Huur
€
_____
corporatie

+



Energie voorschot
€
_____
energiebedrijf

+



Energie eindaf- rekening
€
_____
energiebedrijf

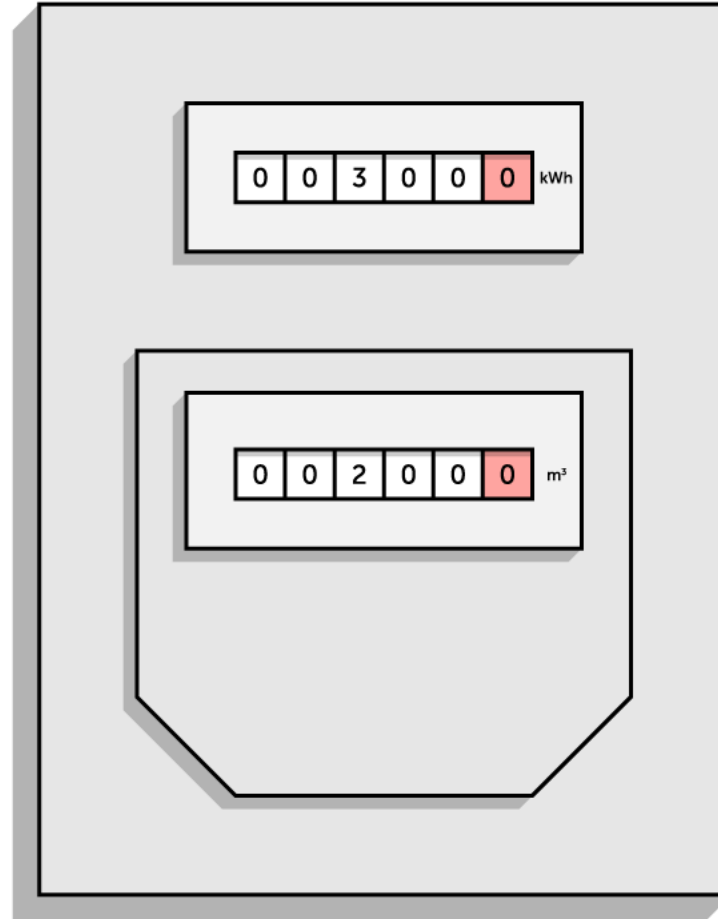
= **Woonlasten**

# Energie eindaf- rekening

stroomverbruik  
gasverbruik  
vaste kosten  
heffingskorting  
netwerkkosten  
vastrecht

---

energiebedrijf



# Energie eindaf- rekening

stroomverbruik

gasverbruik

vaste kosten

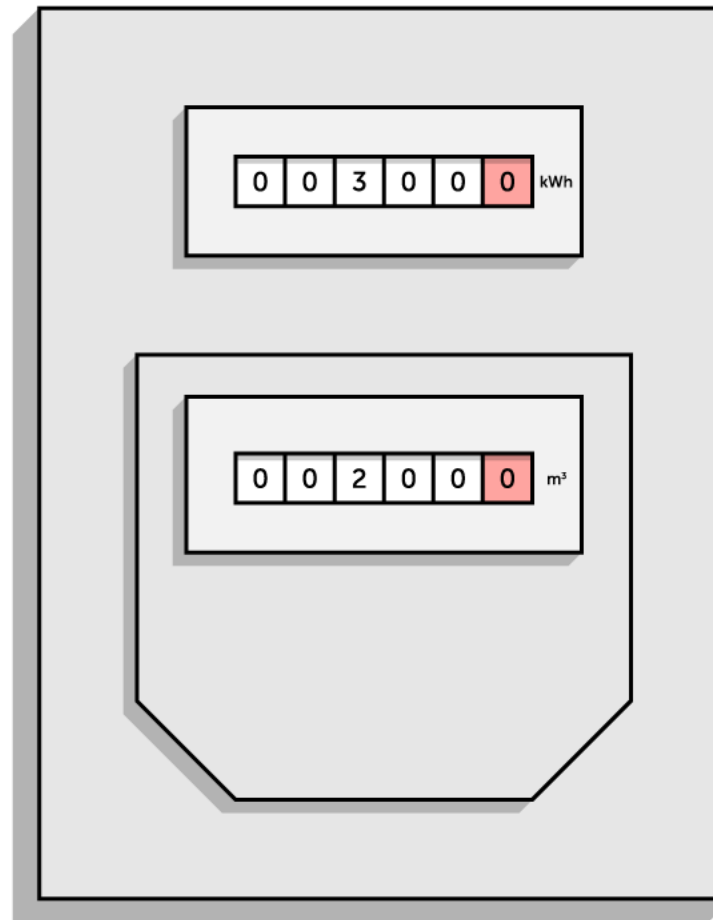
heffingskorting

netwerkkosten

vastrech

---

energiebedrijf



# Energie eindaf- rekening

stroomverbruik

gasverbruik

vaste kosten

heffingskorting

netwerkkosten

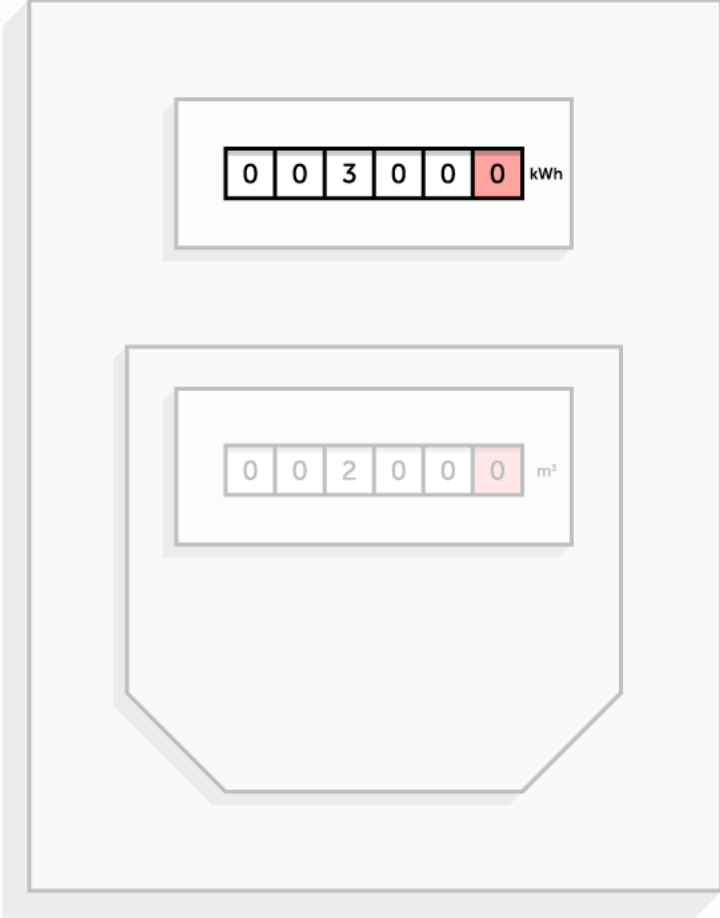
vastrecht

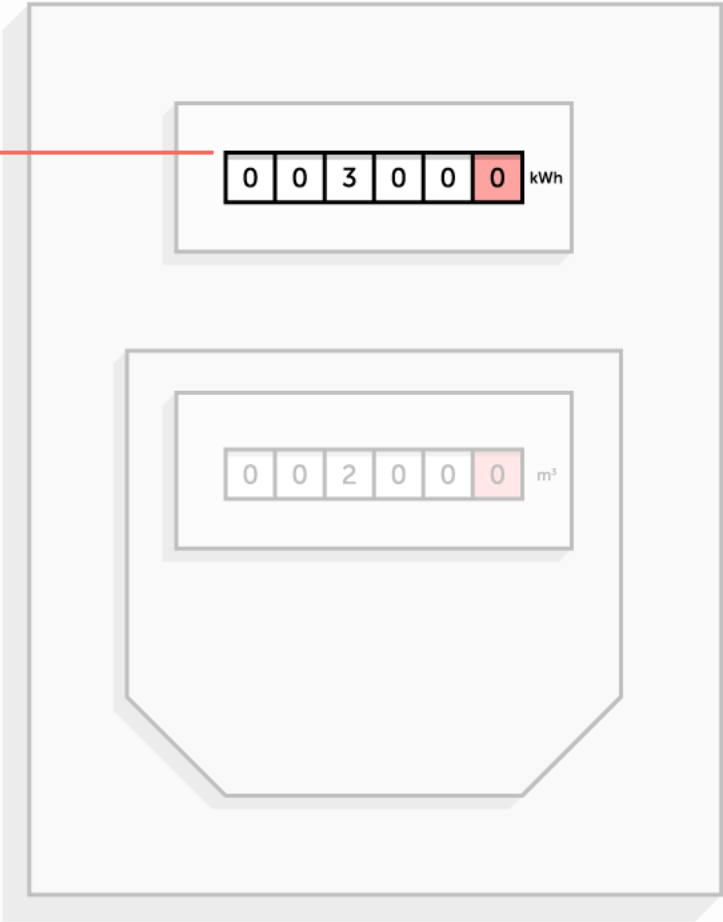
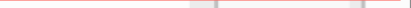
---

energiebedrijf

0 0 3 0 0 0 kWh

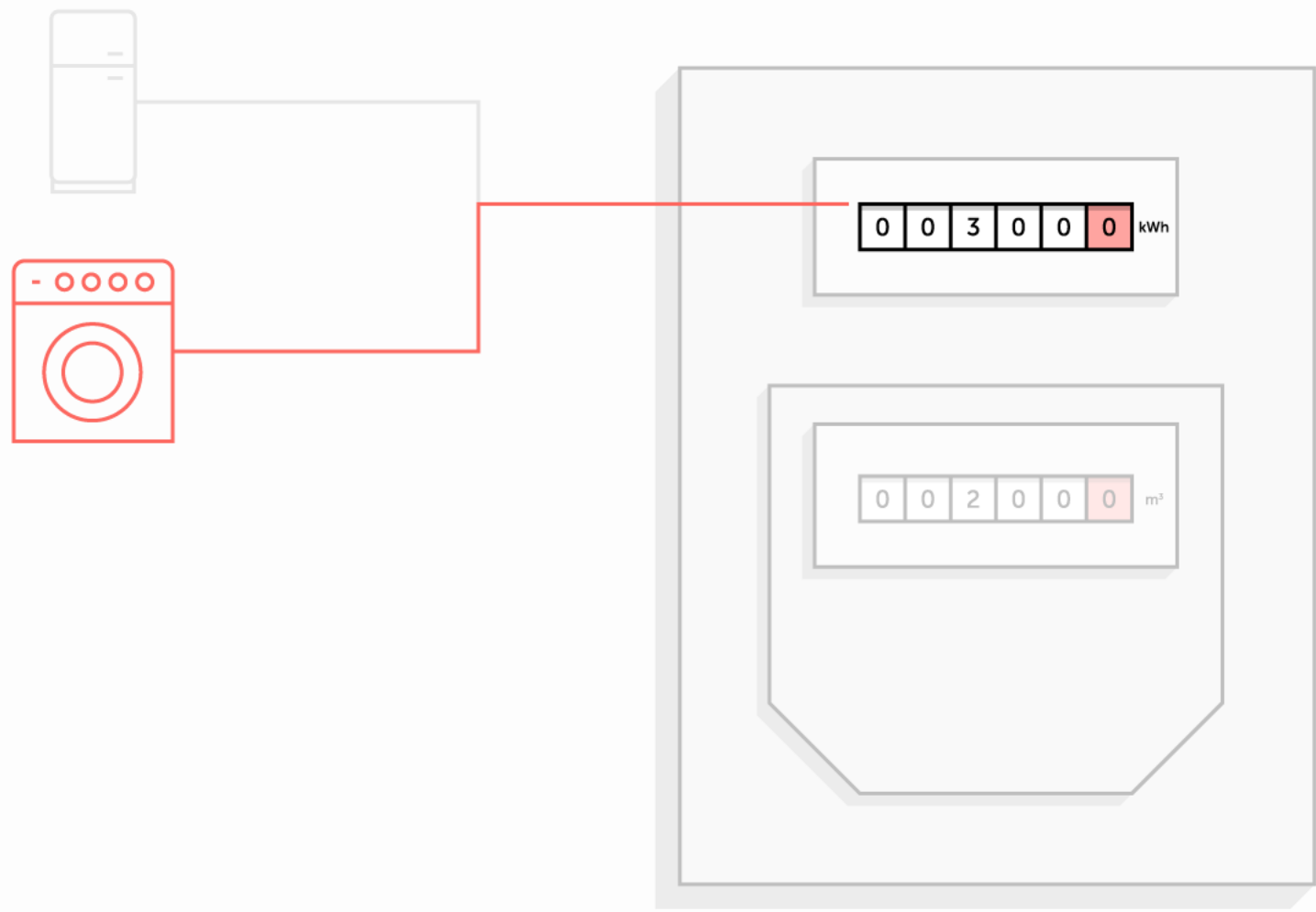
0 0 2 0 0 0 m<sup>3</sup>



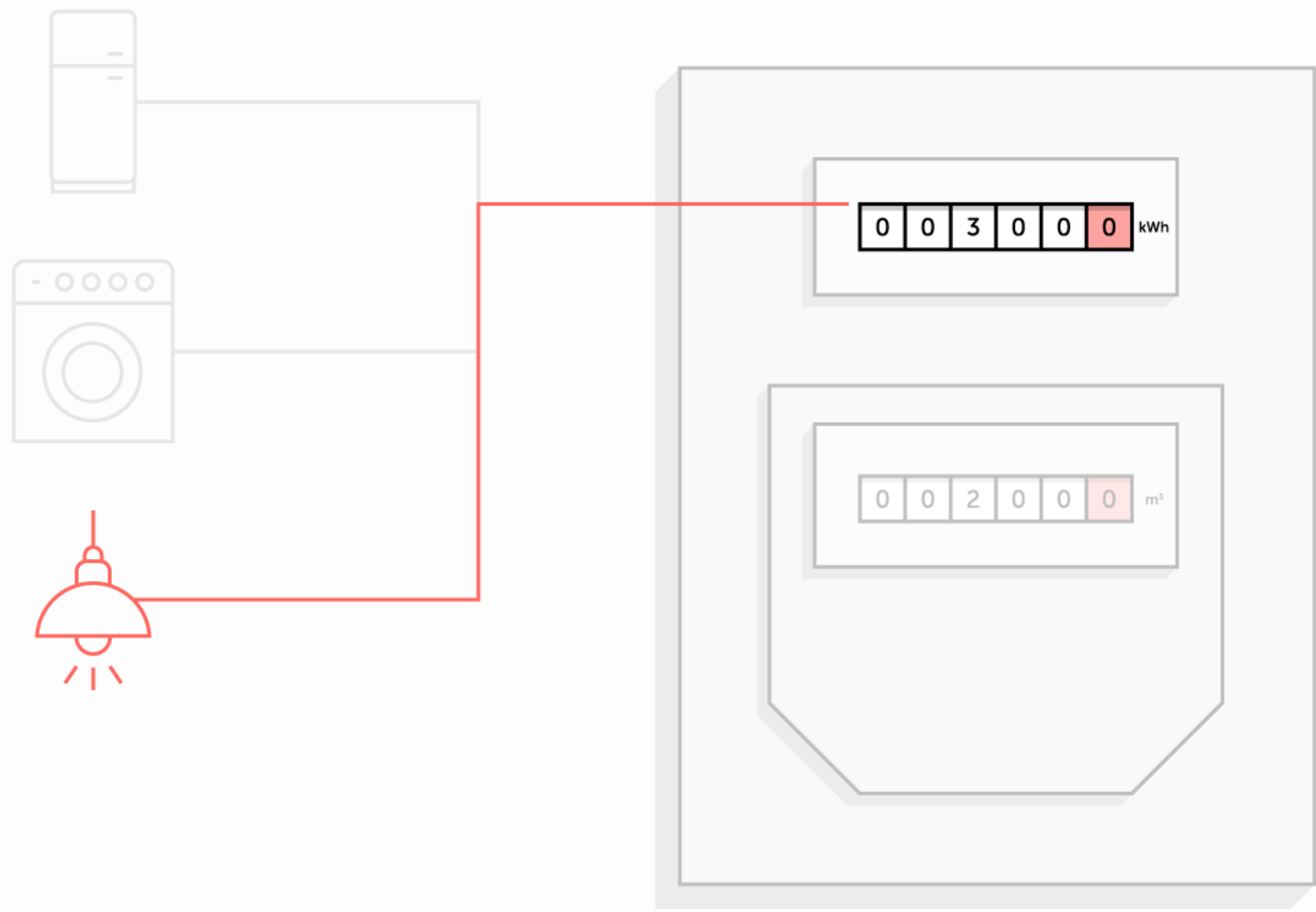


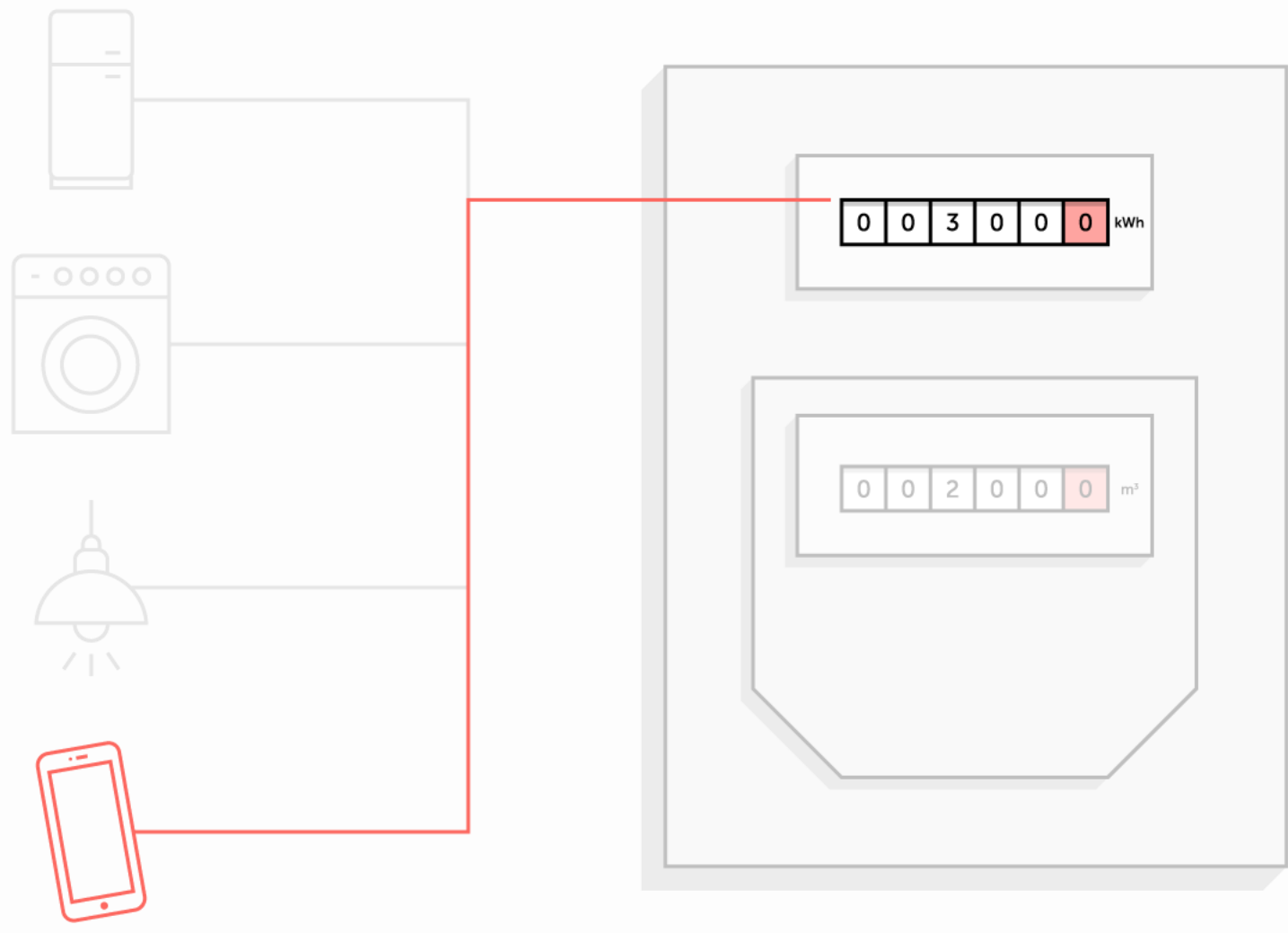
0 0 3 0 0 0 kWh

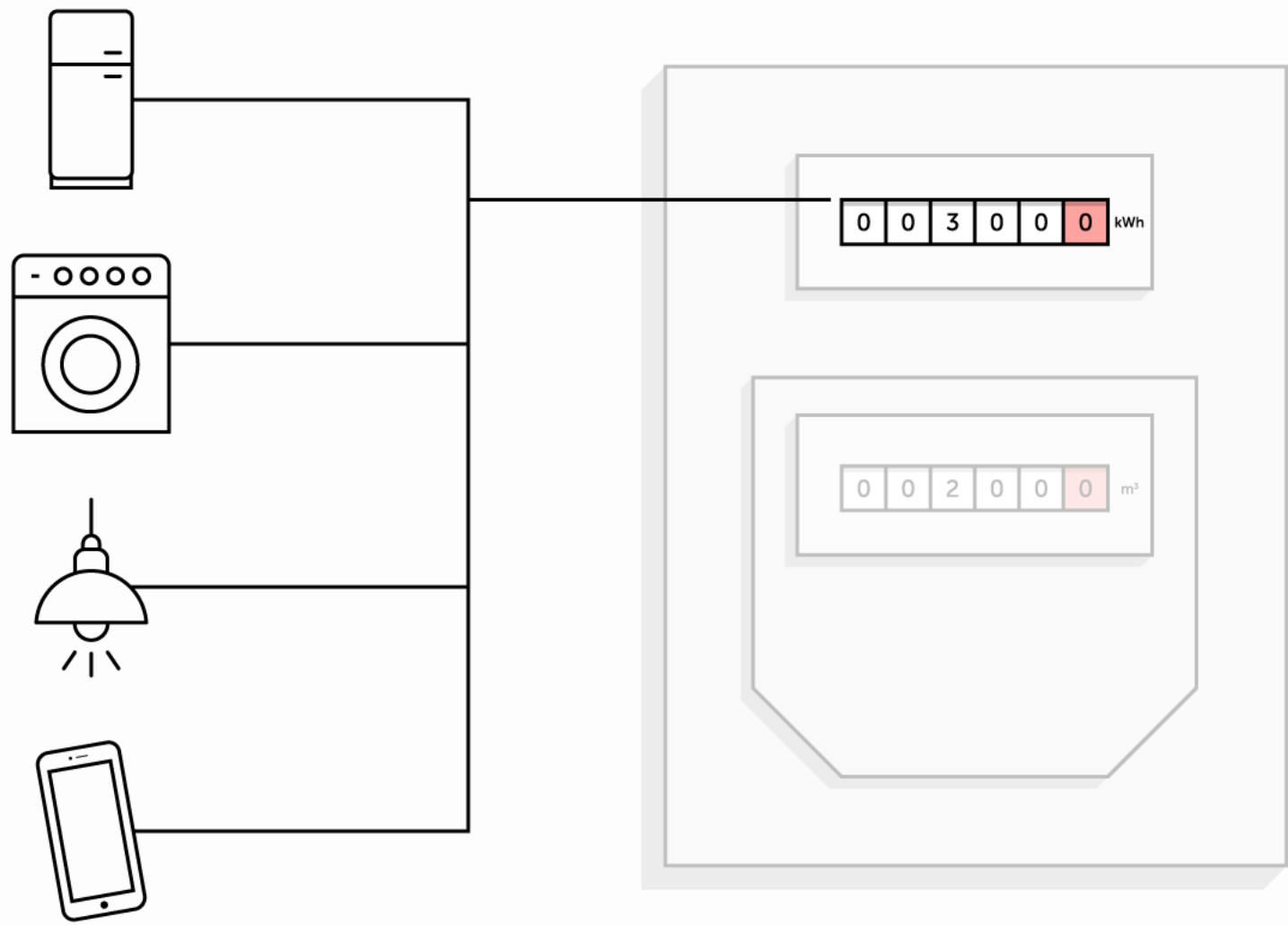
0 0 2 0 0 0 m³

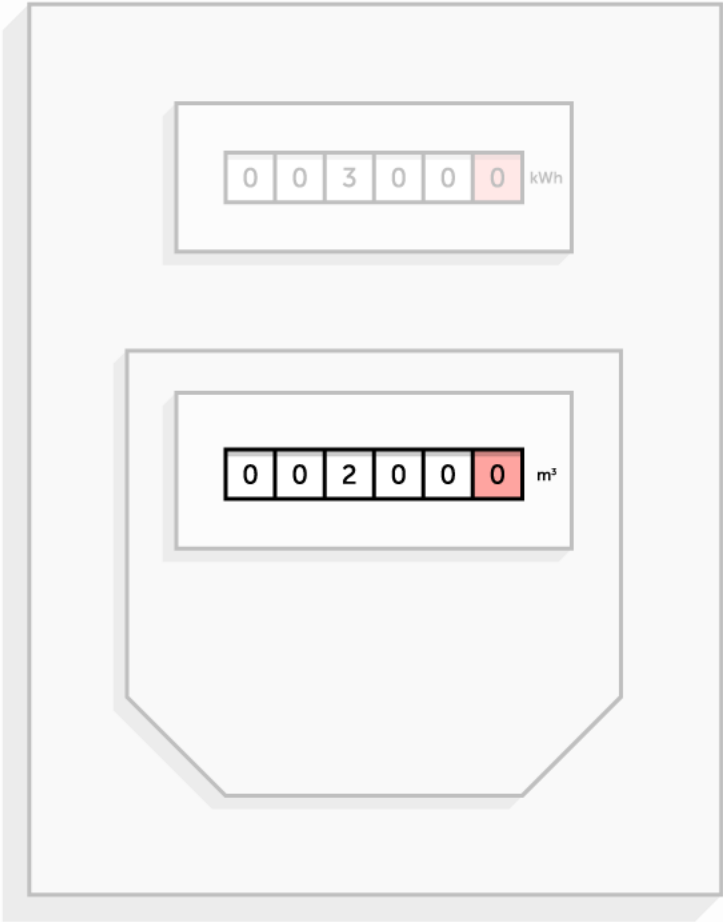






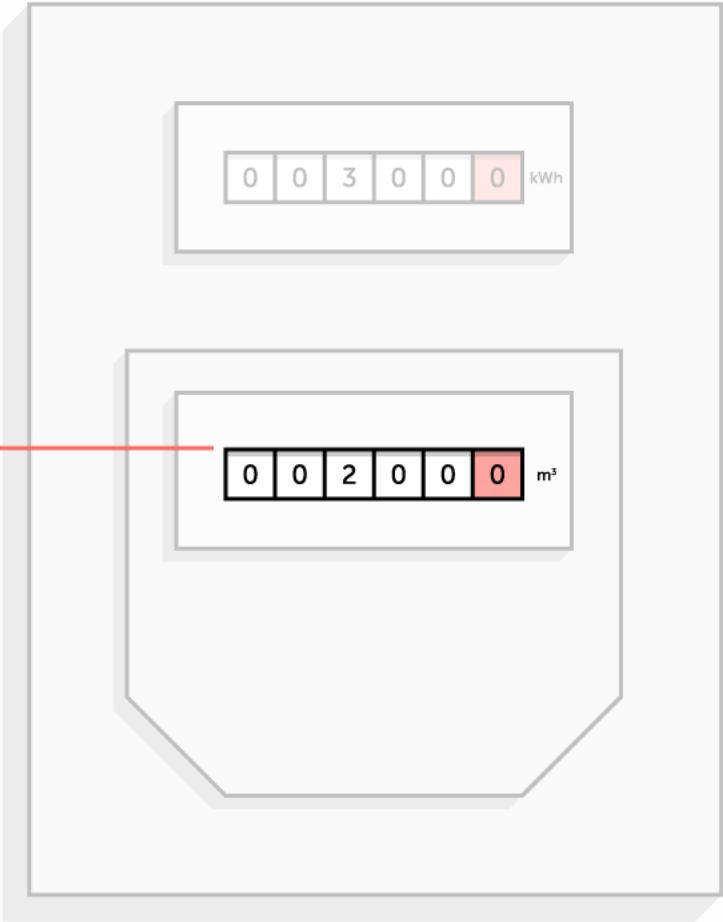






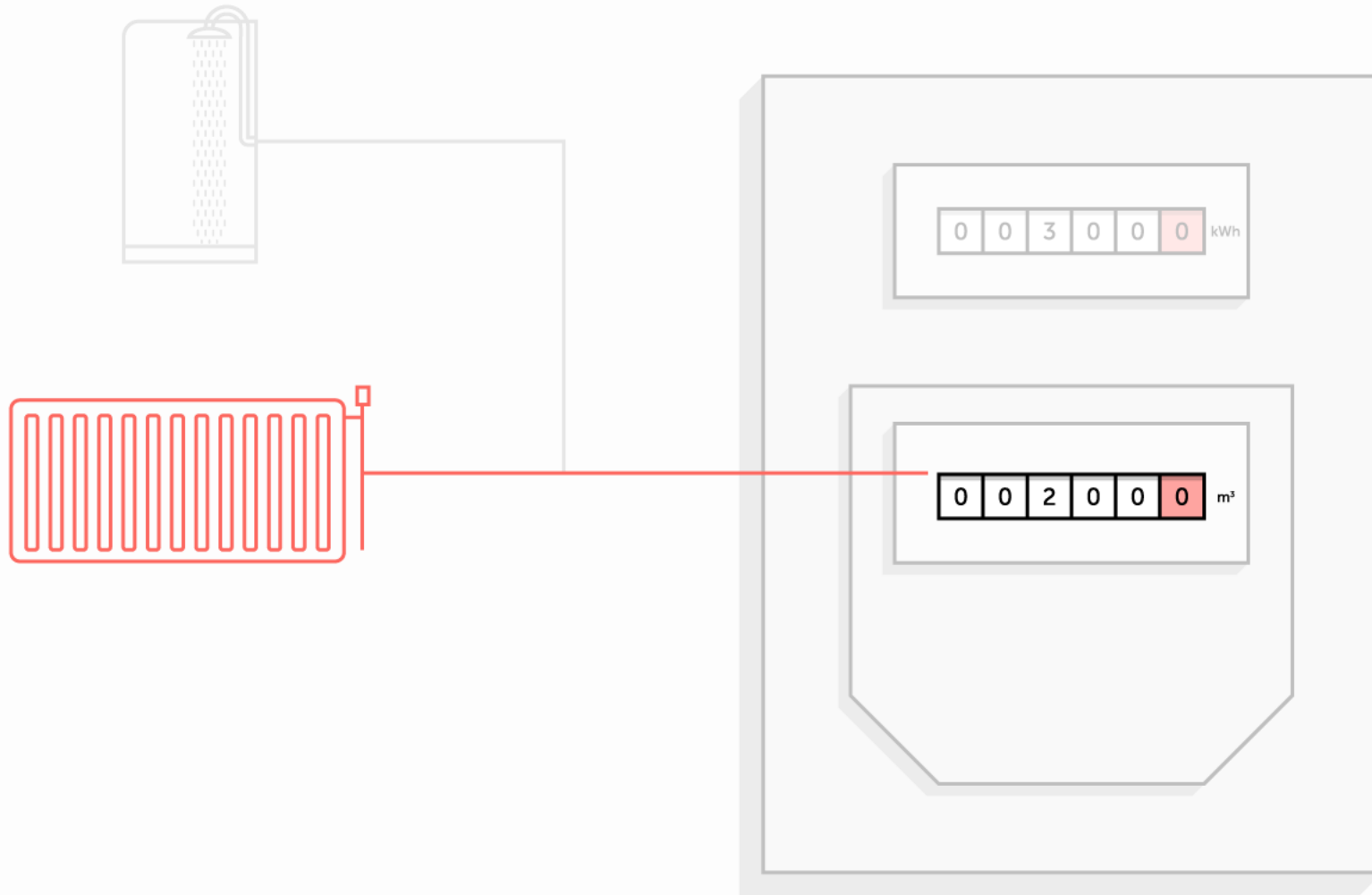
0 0 3 0 0 0 kWh

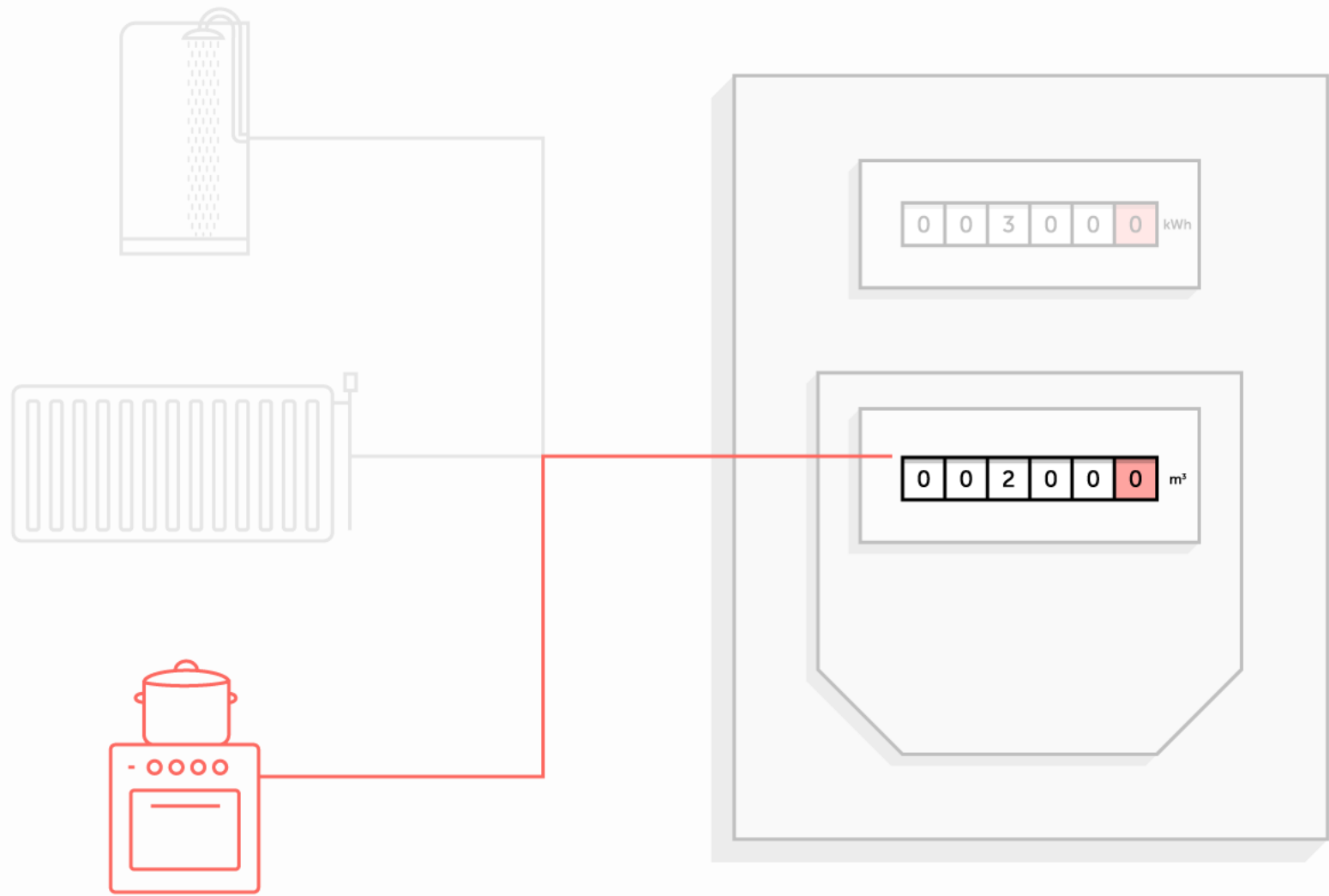
0 0 2 0 0 0 m<sup>3</sup>

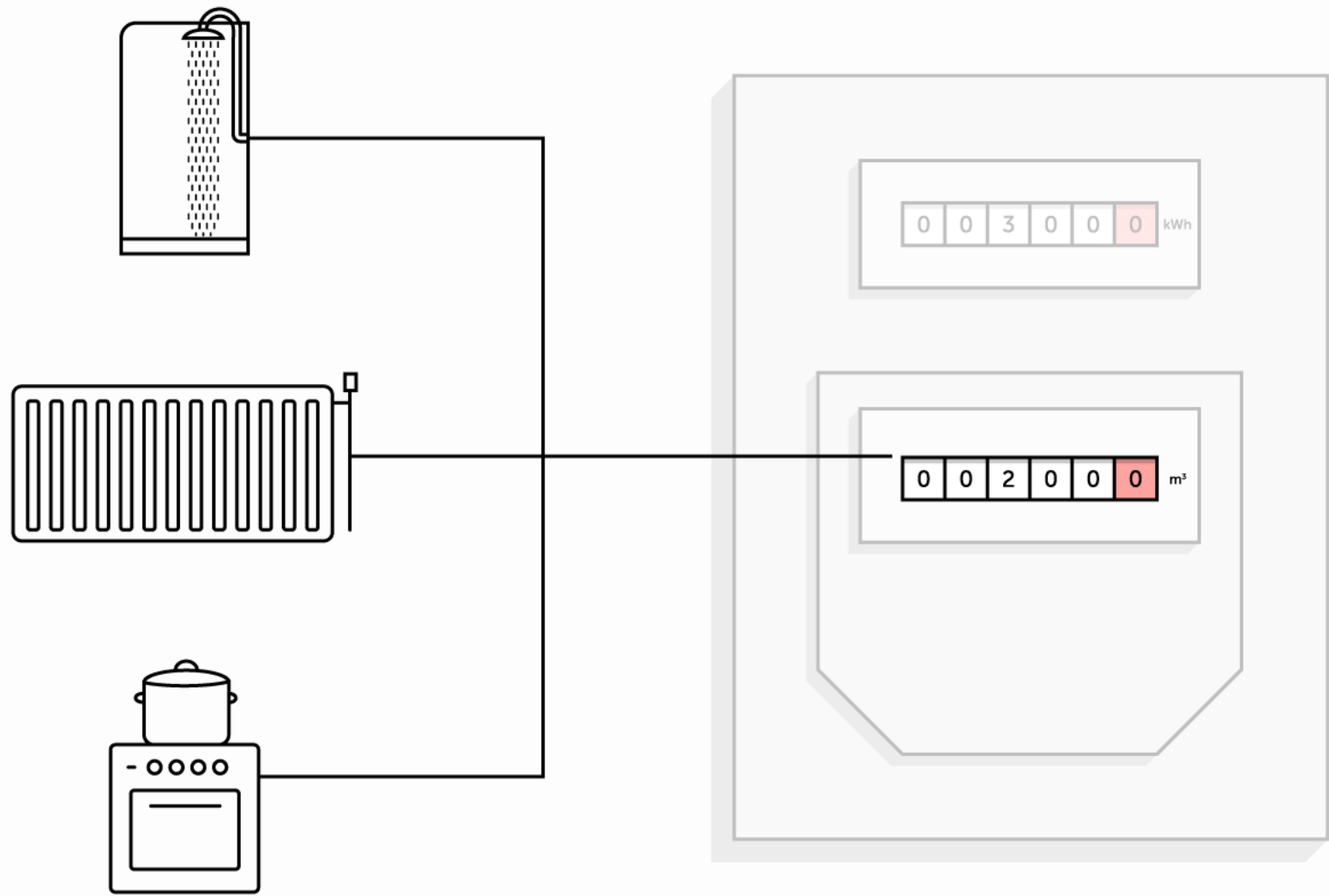


0 0 3 0 0 0 kWh

0 0 2 0 0 0 m³

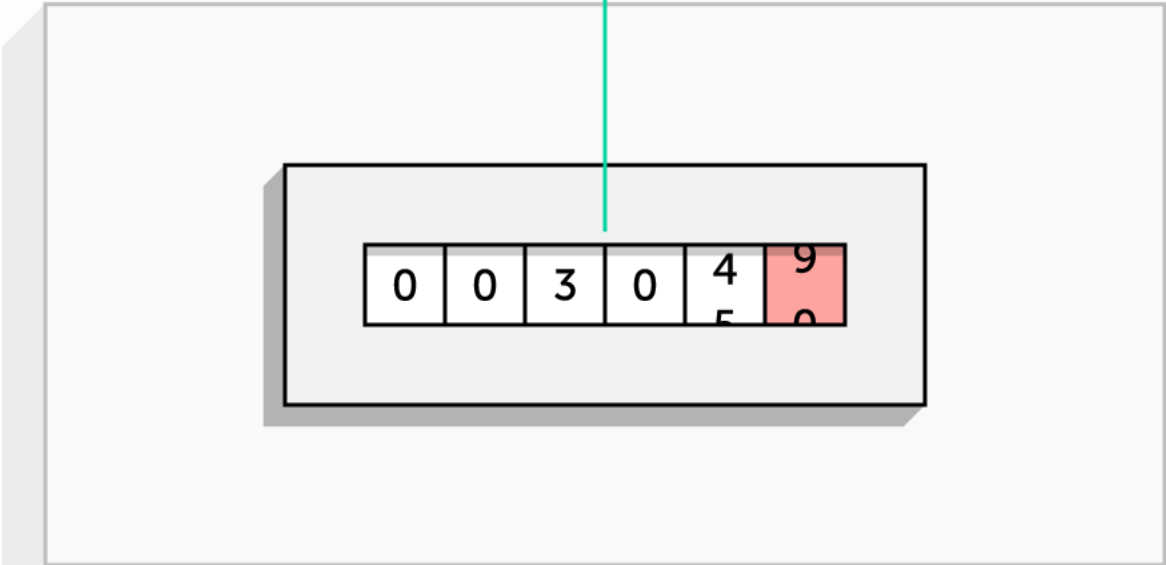
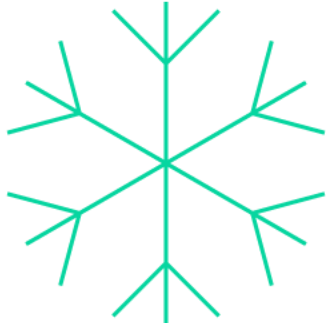




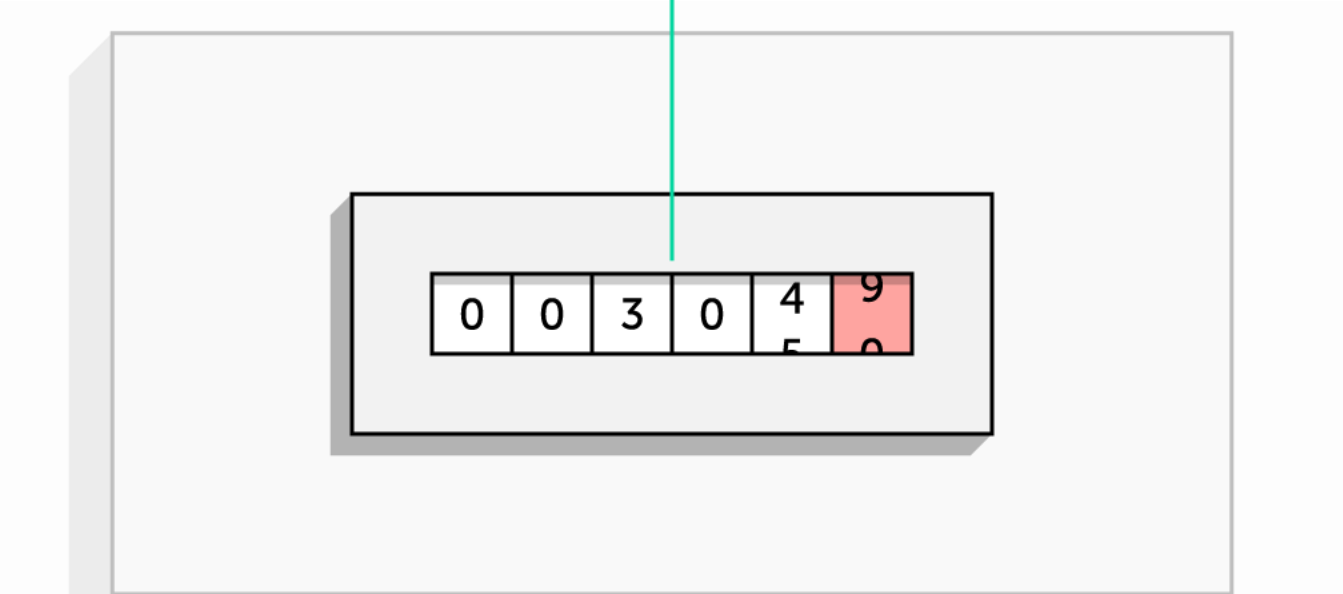
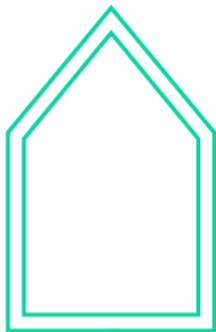




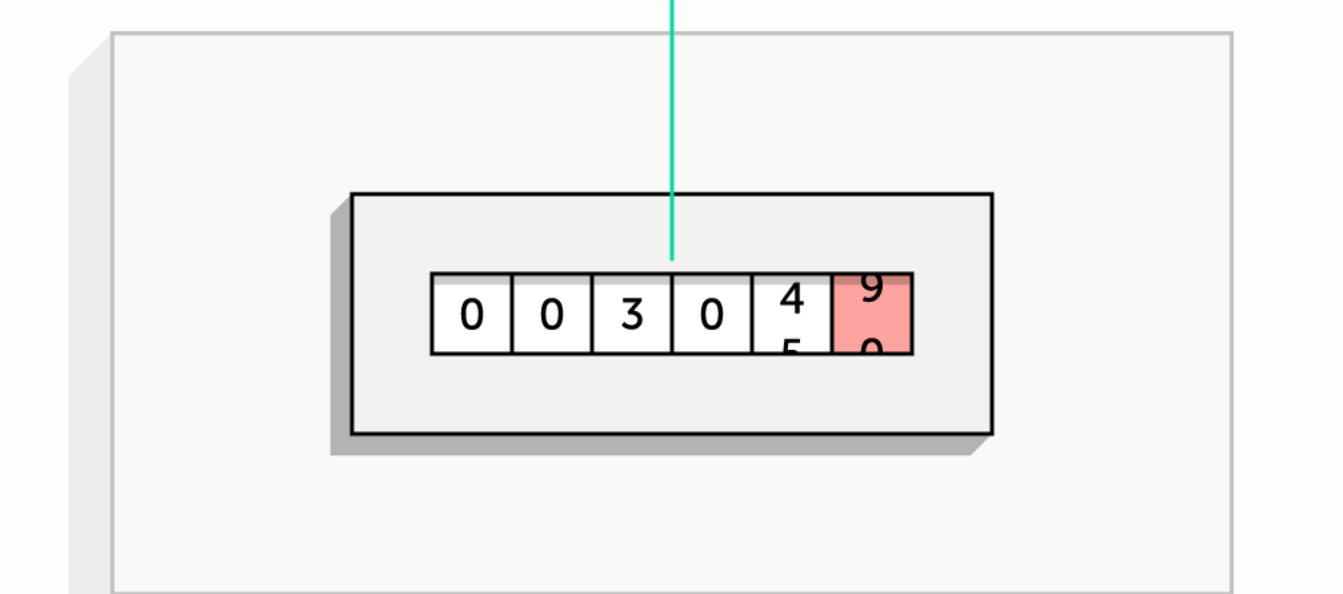
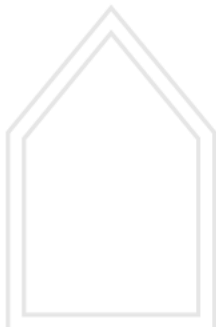
0	0	3	0	4	9
				5	0

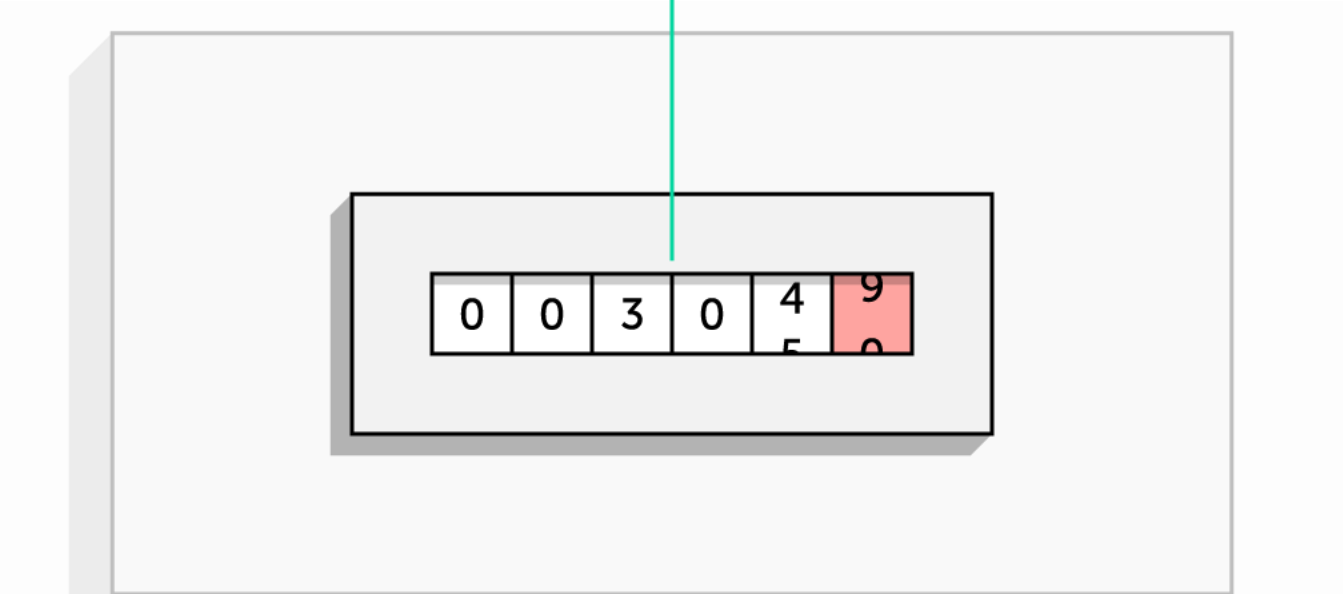
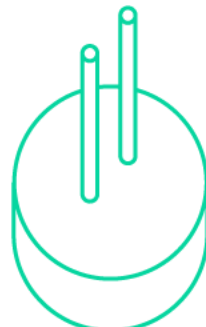
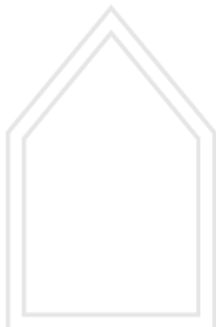


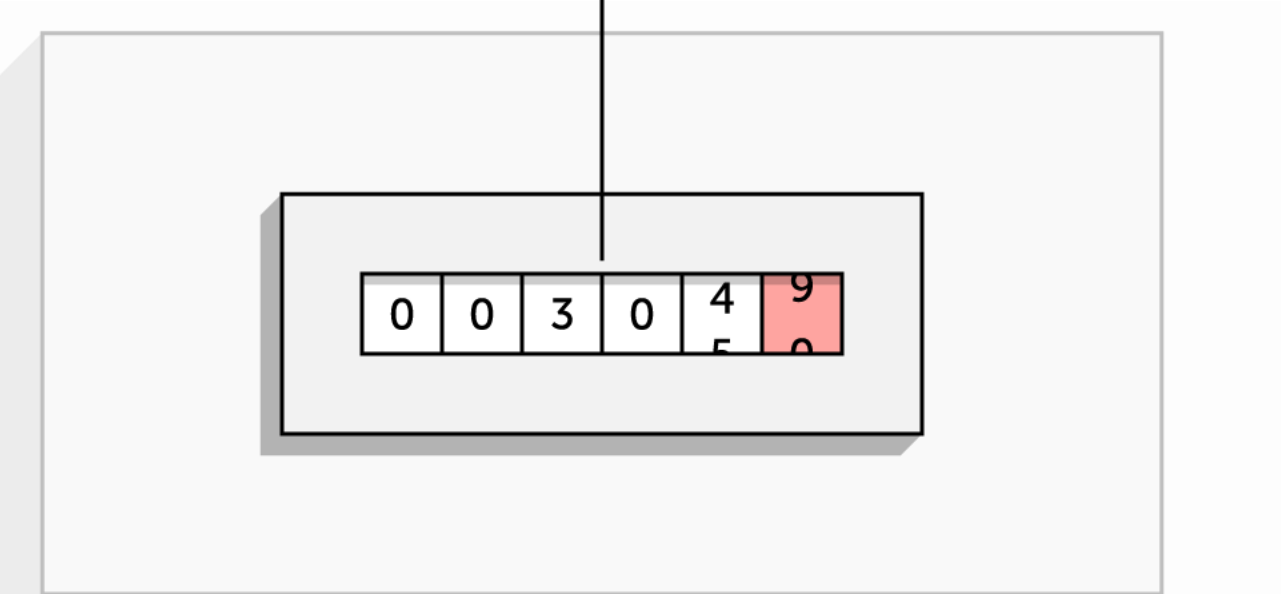
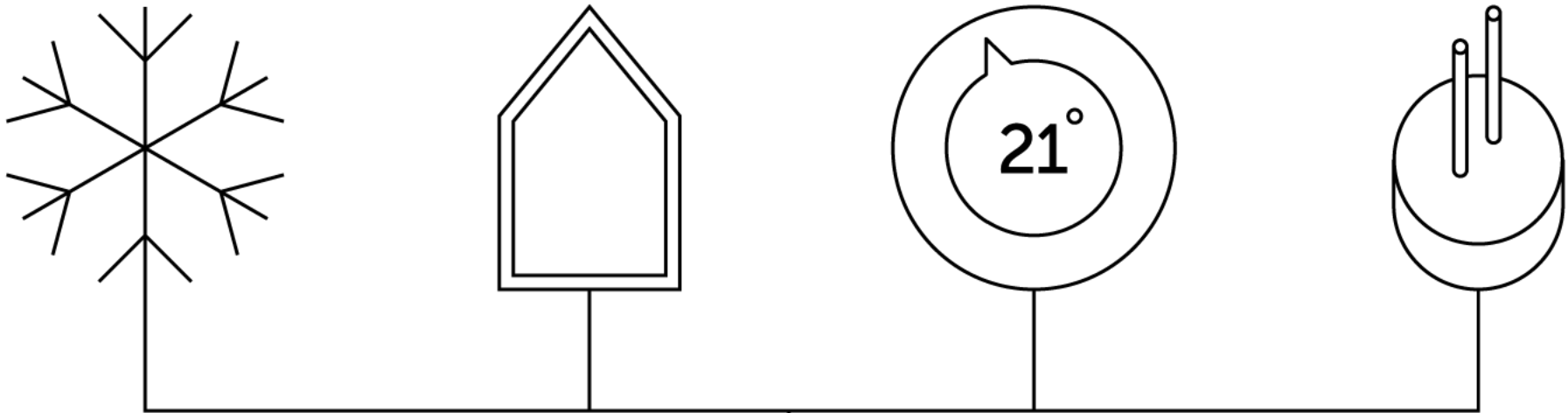
0	0	3	0	4	9
				5	0



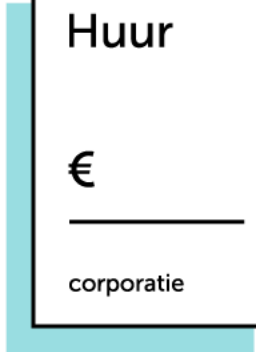
0	0	3	0	4	9
				5	0







0	0	3	0	4	9
				5	0



Huur
€
_____
corporatie

+



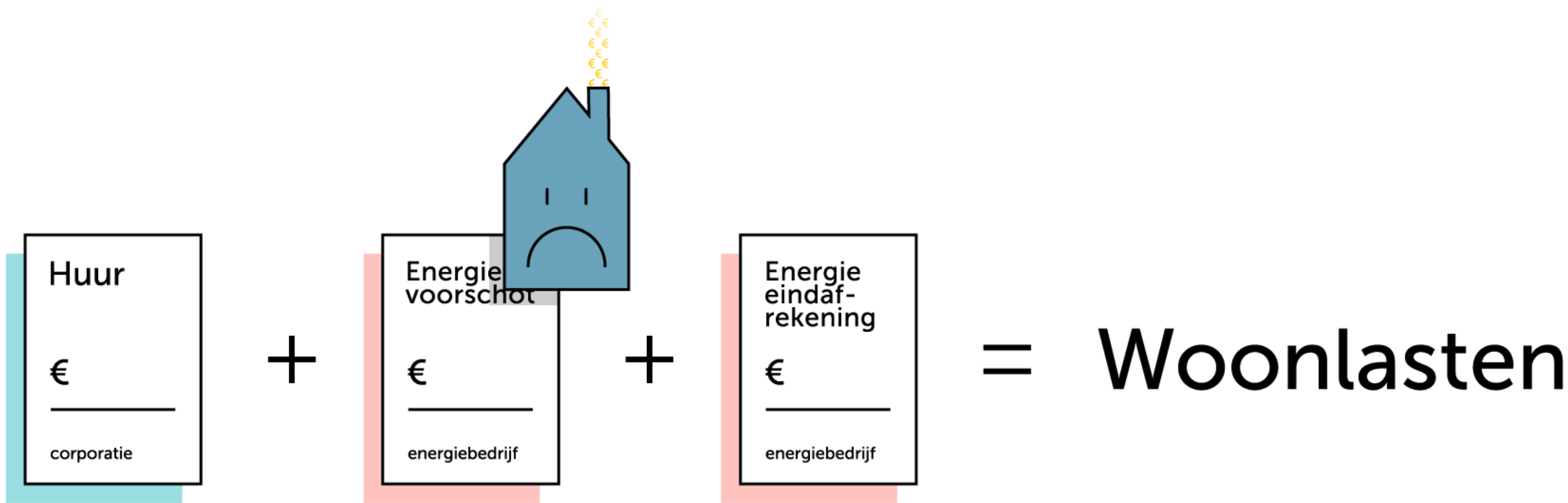
Energie voorschot
€
_____
energiebedrijf

+

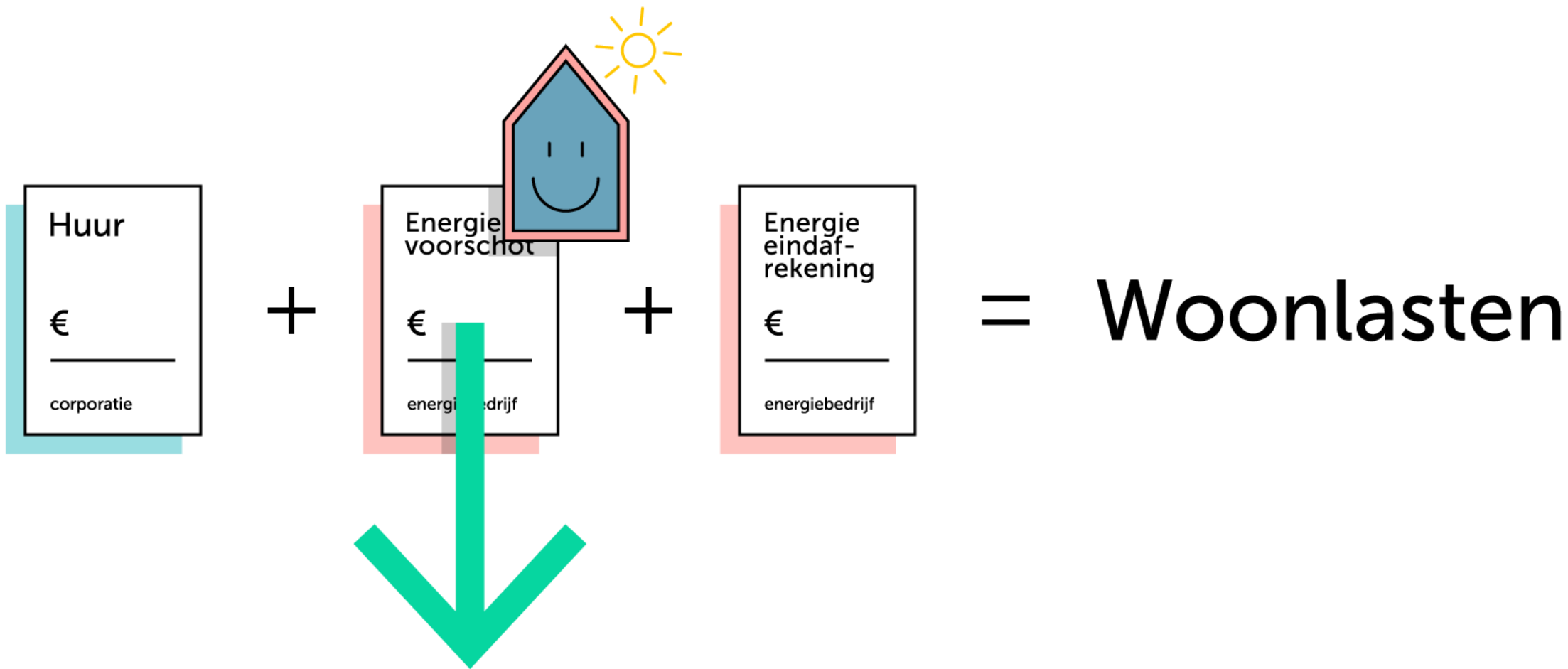


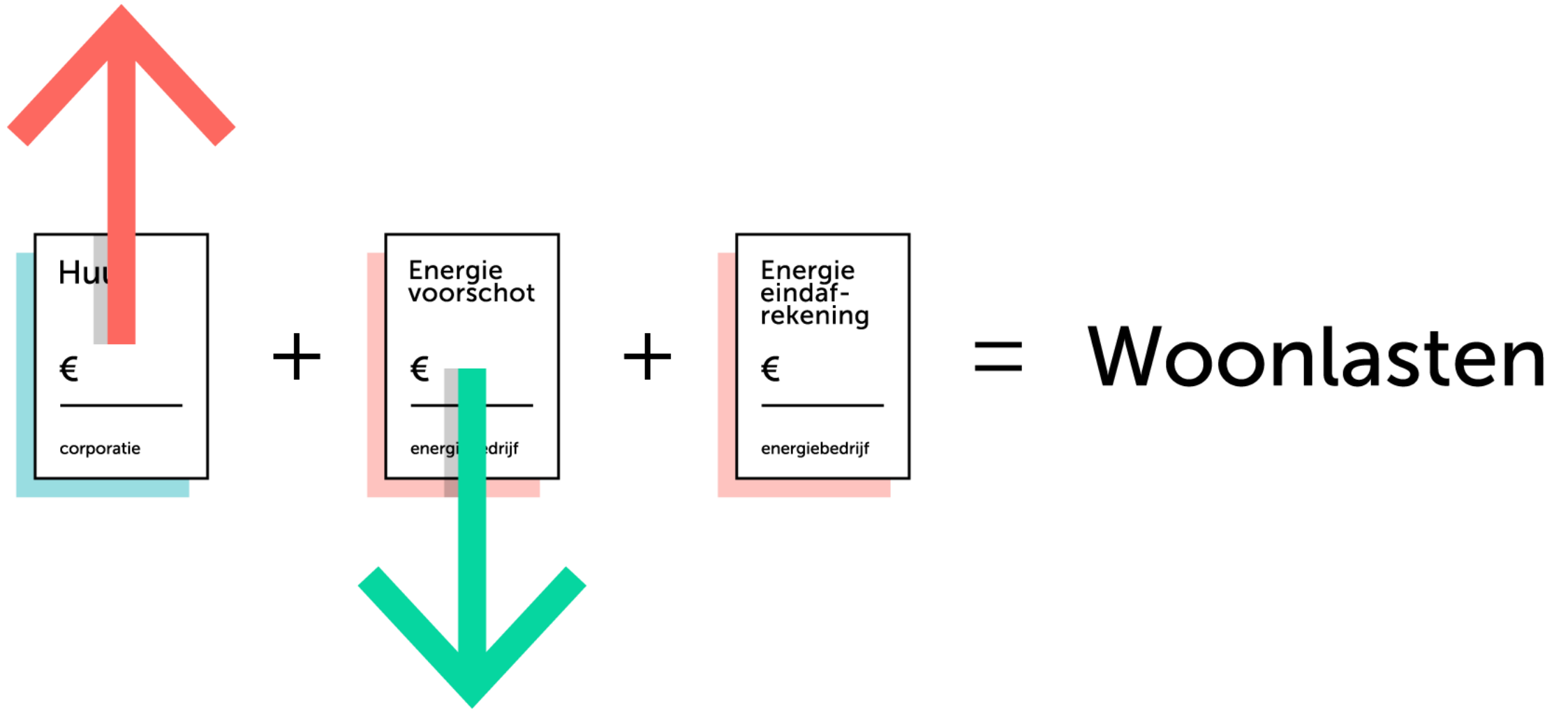
Energie eindaf- rekening
€
_____
energiebedrijf

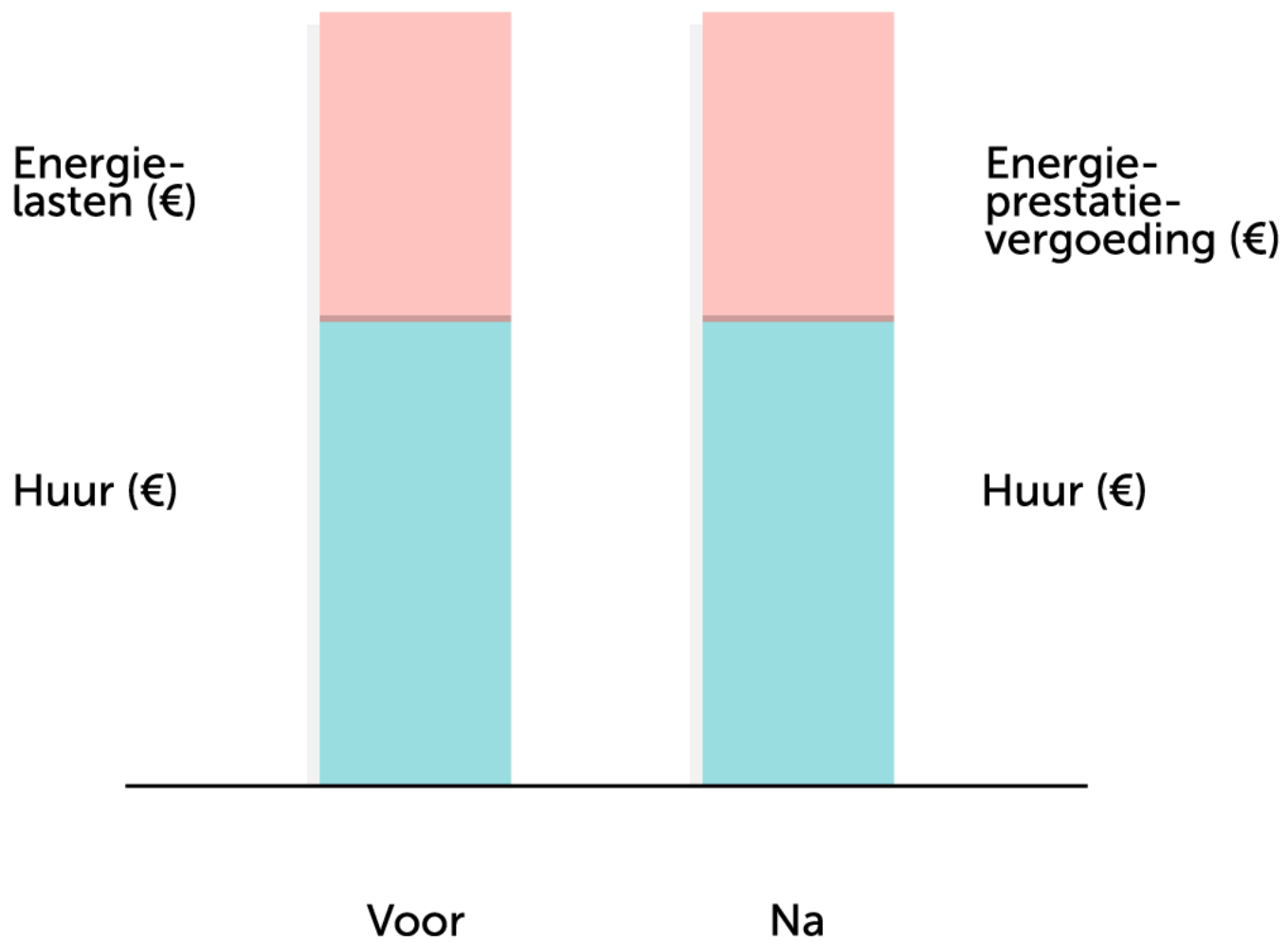
= **Woonlasten**













+



=



+



=

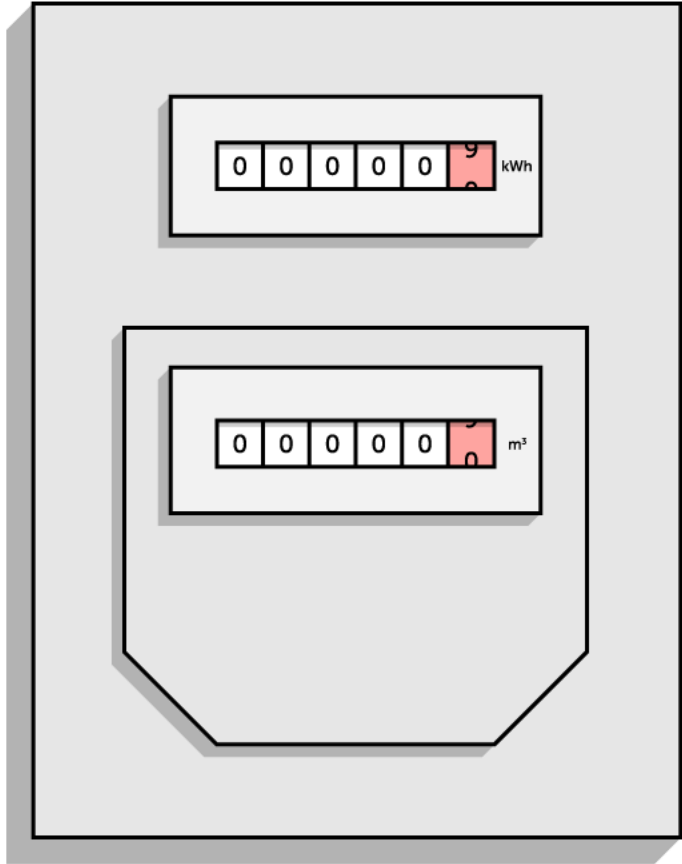


+



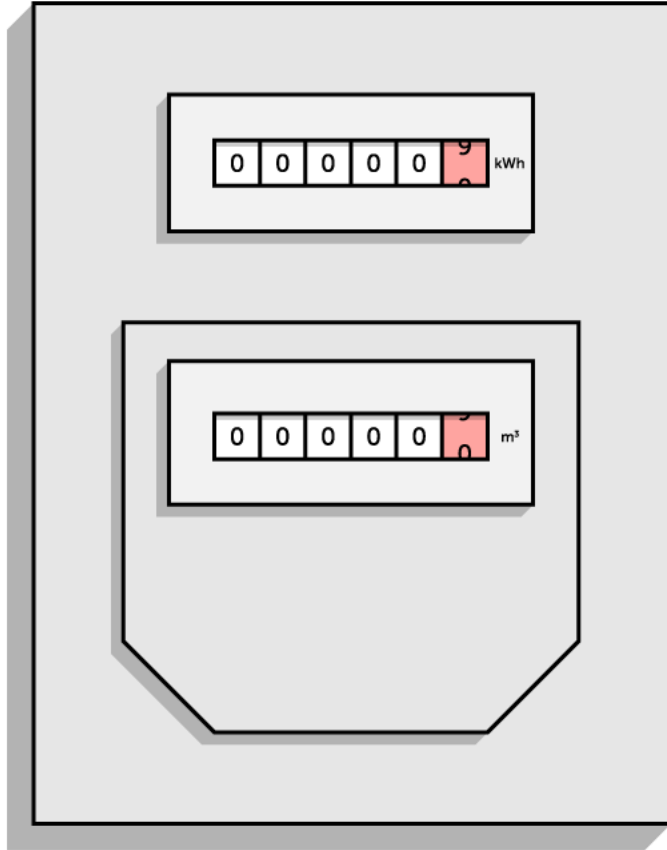
=





0 0 0 0 0 9 kWh

0 0 0 0 0 0 m³

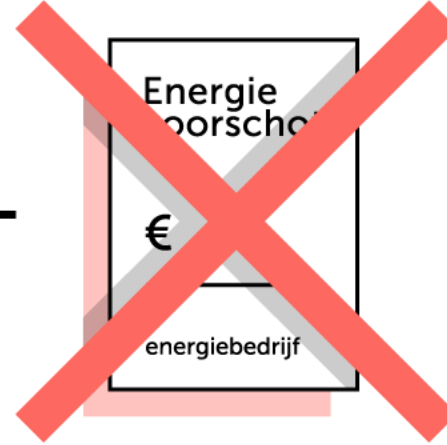


Huur

€ \_\_\_\_\_

corporatie

+



+

Energie eindafrekening

€ \_\_\_\_\_

energiebedrijf

Huur

€ \_\_\_\_\_

corporatie

+

Energieprestatievergoeding

€ \_\_\_\_\_

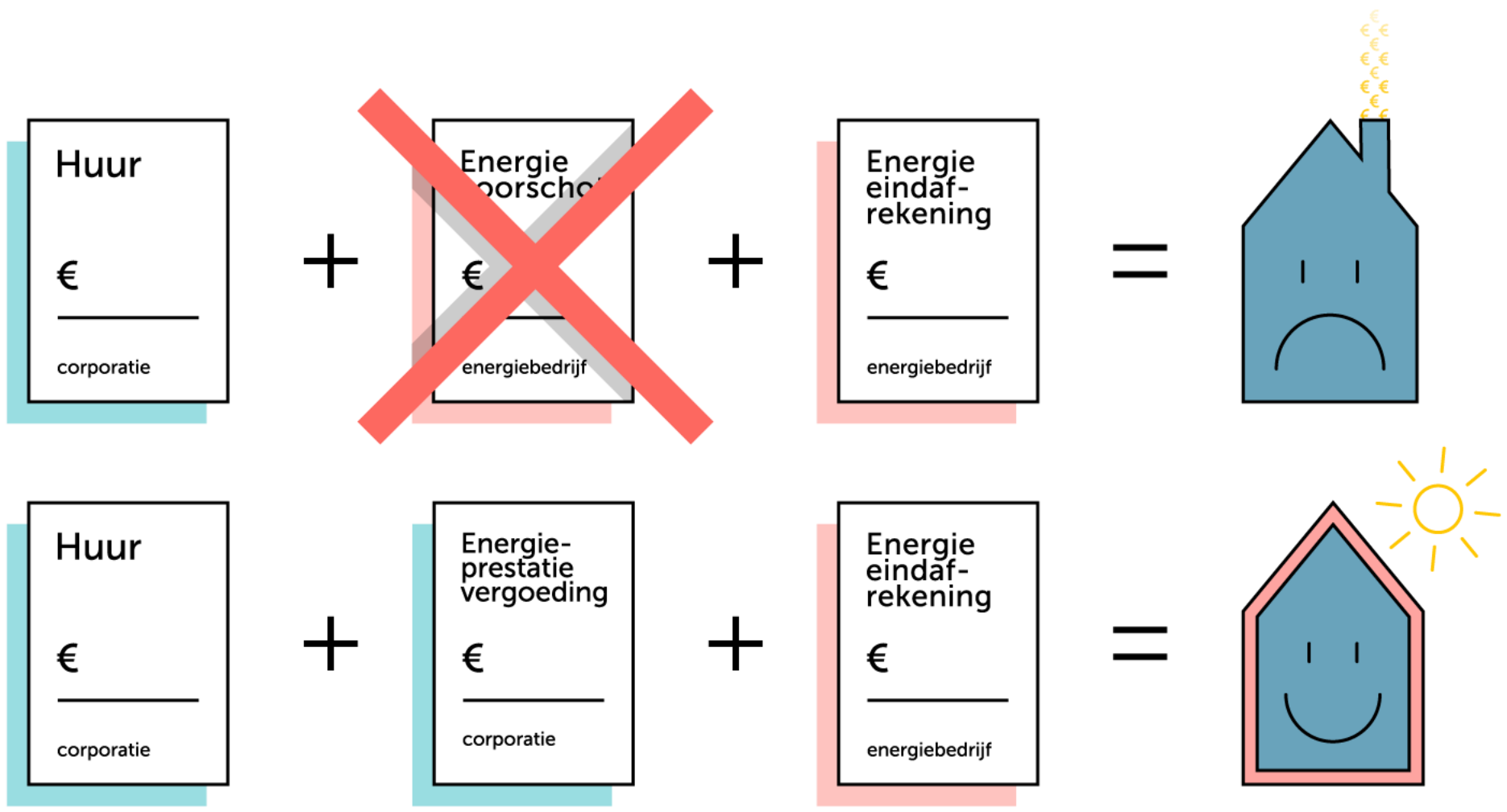
corporatie

+

Energie eindafrekening

€ \_\_\_\_\_

energiebedrijf



Huur  
€ \_\_\_\_\_  
corporatie

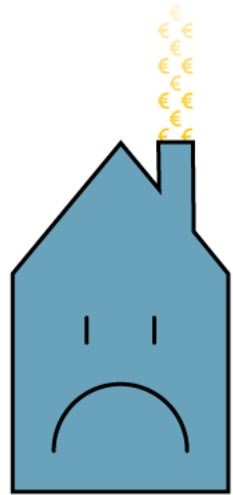
+

~~Energie  
oorschof  
€ \_\_\_\_\_  
energiebedrijf~~

+

Energie  
eindaf-  
rekening  
€ \_\_\_\_\_  
energiebedrijf

=



Huur  
€ \_\_\_\_\_  
corporatie

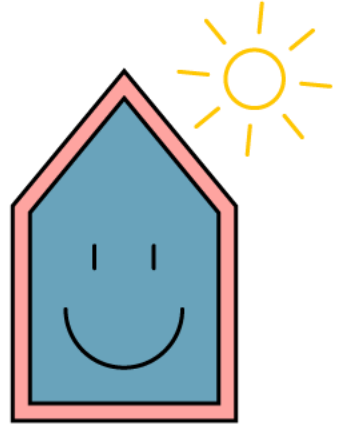
+

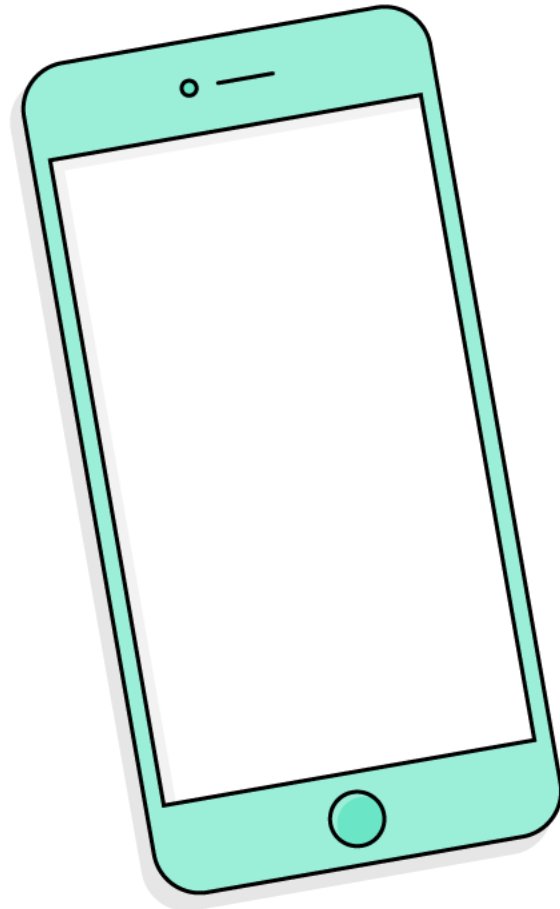
Energie-  
prestatie  
vergoeding  
€ \_\_\_\_\_  
corporatie

+

Energie  
eindaf-  
rekening  
€ \_\_\_\_\_  
energiebedrijf

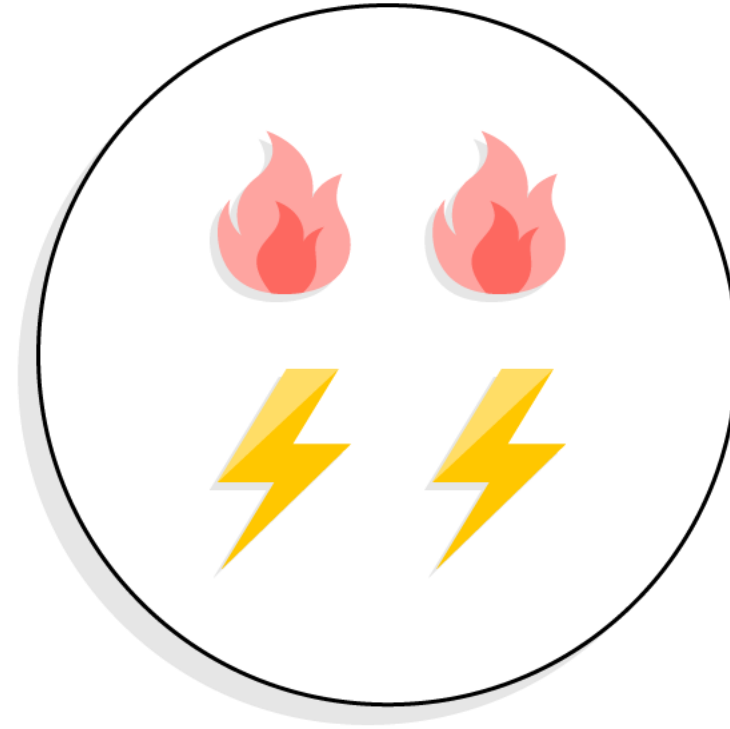
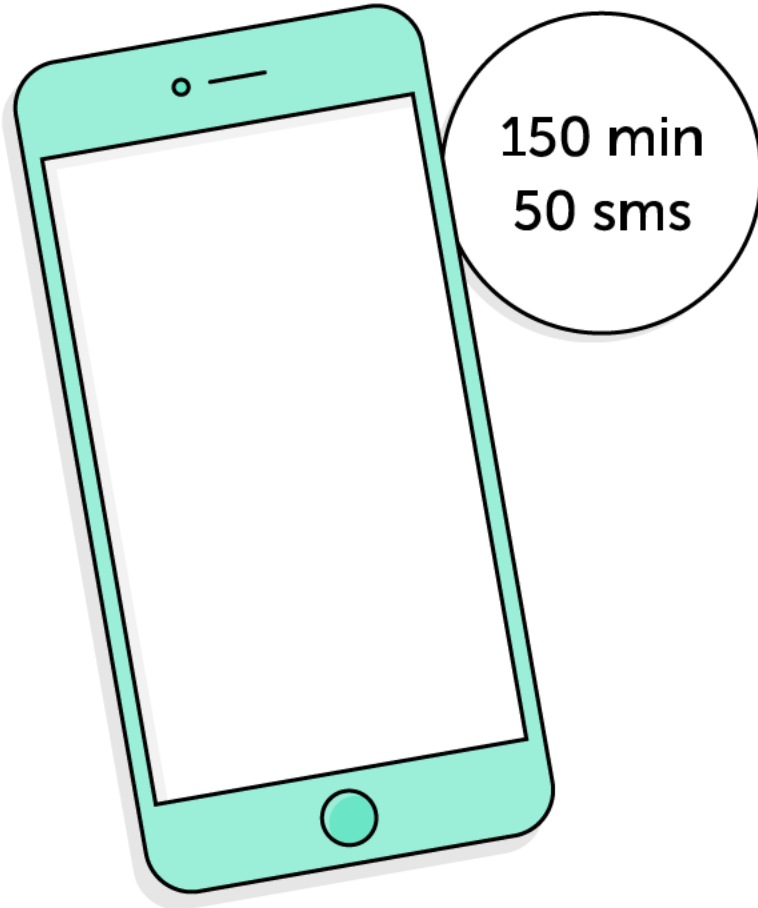
=





150 min  
50 sms





Energiebündel



+



=



Geld terug



+



=



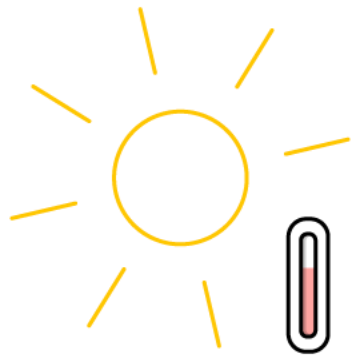
+



=



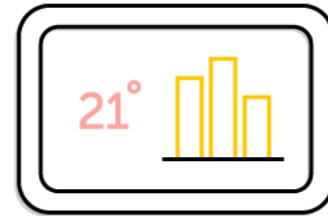
Bijbetalen



Meten



Garanderen



Informeren

**Rekenvoorbeeld invoegen**

